

# THE VITAL LINK

Maury Regional Medical Center

September 2015

Vol. XXXIV, Issue 9

## Critical care services to be consolidated

Work recently began to consolidate critical care services offered by Maury Regional Medical Center (MRMC). Critical care units currently on the first and second floors will be relocated to a consolidated 28,000 square foot space on the medical center's fifth floor.

The medical center's certificate of need for relocation and renovation of critical care services was approved by the Health Services Development Agency in late August. The project will increase the number of critical care rooms from 24 to 26.

## Watson elected to state leadership roles

MRMC CEO Alan Watson has been elected to new leadership roles with the Tennessee Hospital Association (THA) and the Hospital Alliance of Tennessee (HAT), having served on the boards of both organizations for three years.



WATSON

On September 30, the membership of the Tennessee Hospital Association (THA) elected and installed its board of directors for 2016 at the association's annual meeting in Nashville. Watson will serve as chairman-elect of the board and become chairman during the 2016 annual meeting. THA is the premiere organization in Tennessee that promotes and represents the interests of all hospitals and health systems. THA serves as an advocate for health care organizations and the patients

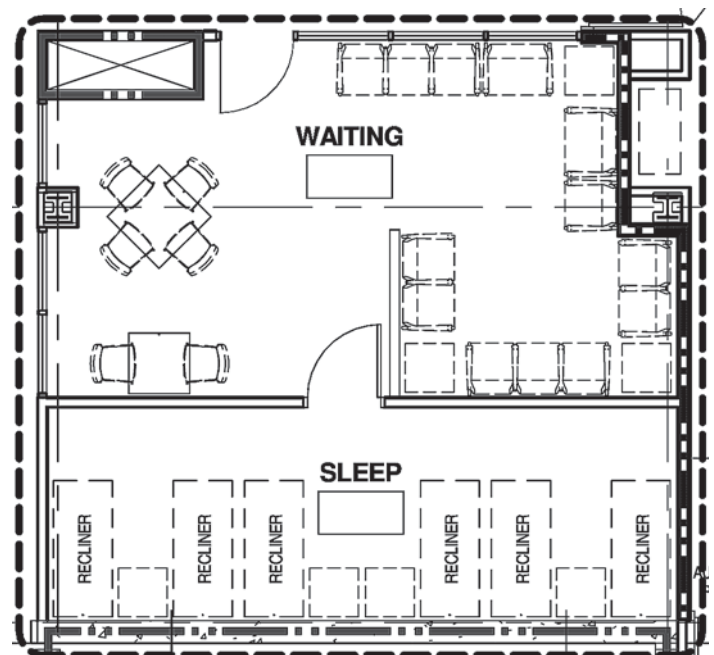
they serve. It also provides education and information for its members, and informs the public about hospitals and

(See "Watson" on page 3)

LEAN processes were used in the design to maximize function and efficiency. Enhanced features of the new critical care area will include:

- Larger rooms that include an alcove with a sleeper sofa for visitors and private bathroom for the patient
- Booms that enable equipment to be powered from a central ceiling arm, reducing fall risks for both patients and staff
- Patient lifts in every room that assist in mobilizing patients and reducing back injuries among staff
- A family/friends common area that includes a sleep room, large kitchenette and shower facilities for loved ones
- Family consult room that enables physicians to privately discuss care with family members

Completion of the new critical care area is estimated for late 2016. All medical and surgical beds are now located on the medical center's third and sixth floors.



The new critical care unit will include a waiting and rest area designed for patients' family members.

**NEW EMPLOYEES**

**ADMITTING/REGISTRATION**

Susan Brooks  
Jalessa Neal  
Emily Reese

**ANESTHESIA**

Benjamin Hargrove

**ENVIRONMENTAL SERVICES**

Carol Gagneur  
Carter Jett  
Sara Slaughter

**FISCAL PLANNING**

Brandi Simmons

**FOOD & NUTRITION**

Ronni Carpenter

**IMAGING**

Angela Hardison

**LABORATORY**

Cassie Henkel  
Barbara Lemaster

**NURSING**

Tiffany Brooks  
Mikailey Brown  
Dara Dugger  
Katie Eubank  
Roslin Gibbs  
Ginger Hamilton  
Abbi Haywood  
Tracy Hull  
Caitlin Ingram  
Tabatha McNeese  
Dalton Payton  
Kayla Ridley  
Brooklyn Robbins  
Callie Roberts  
Heather Thomas

**PHYSICAL THERAPY**

Amy Smith

**PRIMECARE CLINIC**

Stephanie Carroll

*(Continued on next page)*

# MRMC welcomes four physicians

Four physicians recently joined the medical staff at MRMC.



ESSARY

SARAH D. ESSARY, M.D., a specialist in internal medicine and pediatrics, is associated with Family Health Group (FHG) Hospital Medicine.

Dr. Essary received her medical degree from the Indiana University School of Medicine in Indianapolis, Indiana. She completed her internship and residency in internal medicine and pediatrics at Banner Good Samaritan Medical Center in Phoenix, Arizona.

Obstetrics & Gynecology.

Dr. Falls received her medical degree from the University of Alabama School of Medicine in Birmingham, Alabama. She completed her residency in obstetrics and gynecology at the University of Pittsburgh Medical Center-Magee Women's Hospital in Pittsburgh, Pennsylvania.

Dr. Falls' office is located at 1203 Trotwood Avenue in Columbia.



FALLS

AMIT N. KESWANI, M.D., a specialist in interventional cardiology, is associated with Vanderbilt Heart-Columbia.

Dr. Keswani received his medical degree from St. George's University School of Medicine in Grenada, West Indies. He completed an internship in internal medicine at the University of Texas Medical Branch in Galveston, Texas and a residency in internal medicine at Baylor College of Medicine in Houston, Texas. Dr. Keswani also completed a fellowship in cardiovascular disease at Ochsner Clinic Foundation in New Orleans, Louisiana and a fellowship in interventional cardiology at the University of Texas Health Science Center in Houston, Texas. He is board certified in internal medicine and cardiovascular disease.



KESWANI

Dr. Keswani's office is located in suite 401 of the Outpatient Pavilion at MRMC, 1220 Trotwood Avenue.

JOANNA C. SHEPHERD, M.D., a specialist in internal medicine and pediatrics, is associated with FHG Hospital Medicine.

Dr. Shepherd received her medical degree from Ross University School of Medicine in Iselin, New Jersey. She completed an internship and residency in internal medicine and pediatrics at The University of Illinois College of Medicine in Peoria, Illinois.



SHEPHERD



**MAURY REGIONAL MEDICAL CENTER**

The VitaLink is published monthly for Maury Regional Medical Center through the Marketing Department. Distribution is to employees, retirees, members of the medical staff, board of trustees, advisory board, Maury County Commission and volunteers.

For address corrections, please contact the Human Resources Department.

Editor: Rita Williams  
Designer: Jesse Foreman  
Writers: Michele Tankersley and Rita Williams  
Proofreader: Jan Varnado

1224 Trotwood Avenue  
Columbia, TN 38401



Scan this QR code with your smart phone and visit our website.

## NEW EMPLOYEES

(Continued from previous page)

**TRANSPORTATION**

Jerry McCrary

**URGENT CARE**

Motika Goff

## PROMOTIONS

Crystal McClain, from nurse technician to unit secretary, Nursing

Mackenzi Morgan, from nurse technician to phlebotomist/patient care assistant, Nursing

Amy Richardson, from clinical educator, Nursing Professional Development, to nurse practitioner, Employee Health

Dana Salters, from infusion and women's imaging director, to administrative director of oncology services

Erica Whitaker, from certified nurse technician to phlebotomist/patient care assistant, Nursing

## TRANSFERS

Sherrill Crutcher, from RN, Nursing, to RN, Outpatient Surgery

Alicia Golden, from RN, Outpatient Surgery, to RN, Surgical Services

Megan Heichelbech, from MRI technologist to CT technologist, Imaging

Jayne Hornburger, from phlebotomist/patient services representative, FHG, to phlebotomist, PrimeCare Clinic

Melinda Hughes, from associate I, Environmental Services, to transporter, Transportation

Tabatha Johnson, from transporter, Transportation, to courier, Cancer Center

Reba McCoy, from nurse practitioner, Employee Health, to genetic counselor/nurse navigator, Cancer Center

Brandie McQuilkin, from RN, MMC, to RN, LHC

Rhonda Porter, from nurse manager to RN, Surgical Services

Angela Rodgers, from imaging technologist, Maury Regional Spring Hill, to radiologic technologist/patient care, FHG

Katherine Skinner, from RN, Nursing, to RN, Surgery Center

(Continued on next page)

## ORGANIZATIONAL ANNOUNCEMENT—

# Hendrickson named laboratory director

Van Hendrickson has joined MRMC as director of laboratory, according to COO Paul Betz.



HENDRICKSON

Hendrickson has more than 35 years of experience in laboratory management, most recently serving as administrative director of the laboratory at Good Samaritan Regional Health Center in Mt. Vernon, Illinois.

Hendrickson holds a bachelor's degree in biological science from Southern Illinois University and has experience as an inspector for the College of America Pathologists and a clinical instructor.

"Van's extensive experience in laboratory management and accreditation standards will be a valuable addition to our organization. We are very pleased to welcome him to the medical center and our community," said Betz.

## MRMC/FHG welcome CORE

CORE Physicians joined the Family Health Group (FHG) family of practices on September 1. The practice is located at 1114 West 7th Street in Columbia and consists of ten physicians and 49 employees.

CORE has been a strong and established group of providers for many years and demonstrates a commitment to excellence in patient care and service. The group's goals are strongly aligned with the organization and its desire to develop disease prevention and wellness programs, strong chronic disease management protocols and efficient diagnosis of acute illnesses.

FHG, an affiliate of Maury Regional Medical Center, now includes more than 50 physicians with locations in Maury, Lewis, Marshall and Wayne counties.

## Watson *(Continued from page 1)*

health care issues at the state and national levels.

Watson was also elected the chair for HAT on September 29. HAT promotes the value and benefit of not-for-profit community hospitals in Tennessee through public policy and lobbying regarding governmental issues that impact hospitals, including tax exemption, community benefits, managed care and other matters.

Watson has 33 years of health care experience, including 15 years of clinical work as a nuclear medicine technologist. In addition to serving as CEO at Maury Regional Health System since 2012, he has served as CEO at St. Mary's Medical Centers of Campbell and Scott counties and Baptist Hospital West in the Knoxville area, and CEO at Bradley Memorial Hospital, Cleveland.

Watson is a fellow in the American College of Healthcare Executives. He received a bachelor's degree in nuclear medicine technology from the University of Alabama Birmingham and a master's degree in community health administration from the California College for Health Sciences.



# Golf tournament benefits Foundation

The Maury Regional Health Care Foundation hosted its 16th annual Tony Starks Memorial Golf Tournament at King's Creek Golf Club in Spring Hill on September 14.

Fifty-two teams participated in the event that raised more than \$93,000 to support the Foundation's efforts to assist individuals throughout the medical center's service area, according to Foundation Executive Director Joe Kilgore.

## Winners of the morning round were:

**FIRST FLIGHT, FIRST PLACE:** The Trane team of Dr. Chuck Bramlett, Ronnie Bates, Stu Shunk and Randy Mauldin

**FIRST FLIGHT, SECOND PLACE:** The Salucro Healthcare team of Clint Owen, Patty Gii and Keith Shanks

**SECOND FLIGHT, FIRST PLACE:** The MedCycle Management team of Jason Eads, Seth McCormick, T.J. Schmitt and Rodney Adams

**SECOND FLIGHT, SECOND PLACE:** The Hart Freeland Roberts Designs, Inc. I team of Martin Franks, Mickey Jenkins, Ron Franks and Bill Walter

**THIRD FLIGHT, FIRST PLACE:** The CMS Imaging team of Anthony Anderson, Jim Ross, Keith Bolton and John Lillie

**THIRD FLIGHT, SECOND PLACE:** The United Data Technologies team of Matt Saier, Chris Self, Jackson Ware and David Sullivan

## Winners of the afternoon round were:

**FIRST FLIGHT, FIRST PLACE:** The Steris Corporation team of Daniel Kellogg, Trey Howard, Chris Kimball and Mark Langham

**FIRST FLIGHT, SECOND PLACE:** The WireMasters team of Brad Hill, Brent Hill, Pete Ballard and Roger Birden

**SECOND FLIGHT, FIRST PLACE:** The Aetna team of Troy Williams, Brent McDonald, Scott Bolenbaugh and David Kinsey

**SECOND FLIGHT, SECOND PLACE:** The Bonitz Flooring Group I team of Corbin Clinage, Sam Register, Josh Birdwell and Justin Salmon

**THIRD FLIGHT, FIRST PLACE:** The Mint Condition team of Michael Miller, Gary Townsend, Andrew Short and Mike Short

**THIRD FLIGHT, SECOND PLACE:** The Martin Methodist College team of Stacey Shedd, Richard Madden, David Jones and Scott Combs

## Other winners included:

**LONGEST DRIVE:** Mickey Jenkins, Tracey Gentile and Victor Berrios

**CLOSEST-TO-PIN:** Patty Gii, Keith Shanks, Victor Price, Jim Corum, Ty Watts, Bill Tolar, Marcus Albright and Chris Kimball

**PUTTING CONTEST:** Tim Smith and Bill Dooling

Special thanks to tournament sponsors Hart Freeland Roberts Designs and Maury Regional Medical Center; gold sponsors First Farmers and Merchants Bank, Jani-King of Nashville, MedAssets, Medline Industries and Morrison Healthcare; silver sponsors Brinkman Management and Development, Butler Snow, LLP, Kemberton Healthcare, Morrison Healthcare, RJ Young Company, Salucro Healthcare, Spring Hill Equity Partners and Farm Bureau Health Plans; and, putting contest sponsor National Healthcare Corporation.

## TRANSFERS

(Continued from previous page)

Malinda Woodard, from sterile processing technician, Sterile Processing, to certified medical assistant, FHG

## BIRTHS

Jessica Clayton, Information Technology, and James Walker, EMS, welcomed Wesley James Walker on September 7. He weighed 7 lb. and 2 oz.

Brandi Rains, Nursing, and her family welcomed Maverick Eli Rains on August 30. He weighed 6 lb. and 2 oz.

Brooklyn Russell, Nursing, and her family welcomed Alivia Belle Williams on September 8. She weighed 7 lb. and 10 oz.

## IN MEMORY

Pauline Jett passed away on August 22. She was a retired LPN on Sixth West and worked at MRMHC from 1975 to 1996.



THE TRANE TEAM



THE STERIS TEAM

## MMC lab earns accreditation

The laboratory at Marshall Medical Center (MMC) has earned accreditation from the College of American Pathologists (CAP), according to CEO Phyllis Brown.

The accreditation, which is valid for two years, follows a comprehensive survey of the MMC laboratory and its operations. Accreditation ensures that facilities comply with comprehensive and scientifically endorsed laboratory standards while maintaining accuracy of test results and ensuring accurate patient diagnosis.

“Laboratory Director Jennifer Gidcomb, laboratory medical director Dr. John Olson and staff members from lab and respiratory care are to be commended for their efforts to help our facility earn this accreditation,” said Brown.

## WMC adds endoscopy to services offered

Endoscopy procedures have been added to the services available at Wayne Medical Center (WMC), according to CEO Teresa Grimmett.

Dr. Robert W. McClure, a gastroenterologist on the medical staff at MRMC, performs outpatient endoscopy procedures in the WMC surgical suite.

Endoscopy procedures available at WMC include colonoscopy and upper endoscopy. Procedures may be scheduled by calling the medical center’s surgical services at 931.722.2016. A physician’s order is not required for screening exams.

WMC also offers outpatient surgical procedures for ophthalmological patients, including cataract surgery, as well as anesthesia services for patients who need to be sedated during imaging studies.



*John Hall, Plant Operations, receives his flu vaccination from Angela Lowe, Nursing, during the Fluzaroo event.*

## Flu season begins

Fluzaroo—the annual clinic to provide vaccination for MRMC employees, physicians, volunteers and others who will work in the medical center during flu season—was held on September 22 in the MRMC Wellness Warehouse.

Those who are vaccinated will receive a pink card to wear behind their name badge during flu season. Those who receive vaccination at another location should bring documentation to Employee Health to receive a badge card. Those not vaccinated will be required to wear a mask while in any MRMC or affiliate facility between October 1 and March 31.

Join our growing social network on



facebook.com/MauryRegional  
 facebook.com/LewisHealthCenter  
 facebook.com/MarshallMedical  
 facebook.com/MauryRegionalSpringHill  
 facebook.com/WayneMedicalCenter  
 twitter.com/MauryRegional



## FOUNDATION FUNDS FAITH-BASED HEALTH INITIATIVE

The Maury Regional Health Care Foundation recently began offering a group-based health intervention initiative for local residents. The Faith-Based Intervention—or FBI—initiative was created to provide knowledge to the community about ways to combat health barriers, according to Foundation Executive Director Joe Kilgore.

The concept for the program was developed after a volunteer community group worked for more than two years to address the need to improve the community’s health. The six-week program focuses on addressing physical and medical concerns of local residents through a focus on helping one another, according to Community Health Coordinator Destini Gonyon.

The kick-off of the inaugural program was held on August 22 at Carmack Church of Christ for participants from the congregation as well as residents of the Columbia Housing and Redevelopment Agency. Those attending completed a biometric screening and received a resource guide. There were 36 community members screened with 11 nurses volunteering to assist. Educational presentations were given by Dr. Cheryl Clayton, Chief Dietitian Cindy Dugger, Diabetes Educator Michelle Kennedy and Physical Therapist Leslie Wade.

An FBI program will begin at First Cumberland Presbyterian Church on October 3. Similar programs will be planned at other churches in the service area in the future.



*Jessica Bowling, Nursing, performs a blood pressure check for one of the participants in the inaugural FBI program.*



*Karen Frazier, LPN, demonstrates proper hand hygiene techniques for Elli and Andolyn Carroll during the health fair hosted by Lewis Health Center.*

## LHC hosts health fair and blood drive

Lewis Health Center (LHC) hosted its annual health fair September 12 in Hohenwald. More than 220 people attended the event.

A number of free health screenings were offered to community members, including a skin cancer screening by Dr. Michael Sattasiri, a radiation oncologist with the Maury Regional Cancer Center. Attendees received information on a variety of health and wellness topics from LHC staff and community organizations.

Blood Assurance conducted a blood drive during the health fair with 12 units of blood collected. Maury Regional Emergency Medical Services also provided ambulances and the mobile disaster response unit for tours.

### **Do you know someone interested in volunteering?**

Volunteers are needed to serve in a variety of service areas. If you have a family member, friend or neighbor with time to spare, encourage them to volunteer with the MRMC Auxiliary. For information, call Volunteer Services at 380.4047.



## ANNUAL OPEN ENROLLMENT SET

Open enrollment for 2016 benefits will be held November 6-20. Mandatory one-on-one sessions will be held during this time.

All benefit eligible employees MUST meet with a benefits counselor during one of the available times during the open enrollment period. Employees who do not schedule an appointment and meet with a benefit counselor during this period will not have health, dental/vision, life, cancer or accident benefits in 2016.

In the upcoming weeks, an email notification will be sent when the link to schedule an appointment with a benefit counselor is available on the MRMC intranet.



## Chapel services now offered

Brief non-denominational services are now offered in the MRMC Chapel on a weekly basis.

Services are held every Monday and Friday at 2 p.m. and 2:30 p.m. Each service includes devotion, music, testimony and/or prayers for our patients and caregivers. Chaplain Lyndall Propst conducts the services.

For spiritual support at other times, contact the chaplain's office at extension 4243.

## OCTOBER CALENDAR OF EVENTS

### October 1

BLOOD DRIVE: 7 a.m.-5 p.m., Auxiliary Conf. Room, call 840.4446

### October 3

EXPECTANT PARENT CLASS – UNDERSTANDING BIRTH: 9 a.m.-3 p.m., call 490.7046

### October 3

FREE TOUR OF WOMEN'S FLOOR: 3 p.m., call 490.7046

### October 5

NEW EMPLOYEE ORIENTATION: 8 a.m., Auxiliary Conf. Room, call 380.4017

### October 6

FREE HEALTH FAIR: Marshall Medical Center, 5:15-6:30 p.m., call 359.6241

### October 8

SCRUB SALE: 7 a.m.-7 p.m., Auxiliary Conf. Room, call 380.4075

### October 8

CELIAC SUPPORT GROUP: 5 p.m., First Floor Conf. Room, call 381.1111, ext. 1275

### October 9

SCRUB SALE: 7 a.m.-4 p.m., Auxiliary Conf. Room, call 380.4075

### October 10

EXPECTANT PARENT CLASS – BREASTFEEDING: 9 a.m., call 490.7046

### October 12

FREE SEMINAR – MEDICARE IN 2016: 2 p.m., Auxiliary Conf. Room, call 840.4446

### October 13

COPING WITH CANCER: 5:30 p.m., Cancer Center, call 490.7192

### October 15

FREE BLOOD PRESSURE CHECK: 9:30 a.m., Hohenwald Senior Center, call 490.4600

### October 17

EXPECTANT PARENT CLASS – SAFE SITTER\*: 9 a.m.-3:30 p.m., call 490.7046

### October 19

BREAST CANCER SUPPORT GROUP: 5:30 p.m., Women's Center, call 540.4166

### October 21

FREE BLOOD PRESSURE CHECK: 9:30 a.m., Columbia Senior Center, call 490.4600

### October 21

WOMEN HELPING WOMEN: Noon, Auxiliary Conf. Room, reservations required at 381.1111, ext. 2445

### October 22

OSTOMY SUPPORT GROUP: 10 a.m., First Floor Conf. Room, call 490.4600

### October 24

EXPECTANT PARENT CLASS – JUST FOR SIBLINGS: 9-11 a.m., call 490.7046

**October is Patient-Centered Care Month**

# KUDOS FOR CAREGIVERS

Brenda Adams	Joyce Chandler	Stephanie Frye	Dr. Olivia Johnson	Chelsea Peters	Virginia Snead
Brady Aderholt	Dr. Amit Choksi	Denise Gartin	Becky Jones	Dr. Thang Phan	Jessica Spears
Dr. Steven Barr	Kim Chunn	Robin Graves	Taryn Kendrick	Erin Pilkinton	Tammy Stokes
Chase Beaulieu	Bob Clawson	Brandon Hallmark	Jeanette Kennedy	Maureen Plumb	Cheryl Strong
Tamika Biffle	Ali Conner	Dr. Omar Hamada	Michele Kimbrough	Daniel Potts	Cynthia Tatum
Angie Boshers	Anna Cook	Alicia Harden	Ross Lampright	Jennifer Powell	Nicole Thomason
Donna Brackeen	Tiffani Cornelius	Tammy Hargrove	Taylor Lowe	Stephanie Powers	Nathan Thweatt
Jenna Brewer	David Couch	Tina Harney	Shirley Malone	Chad Reynolds	Charina Tijing
Ryan Brown	Hannah Currington	Rick Harris	Dr. James Marshall	Dr. James Richardson	Kelsey Tucker
Jim Calahan	Wilson Daniel	Shanika Hatton	Jason Martin	Sandra Richardson	Kim Wanasek
Henry Canaman	Barbara Dreher	Nina Herston	Stacey Mashburn	Flamonte Roberts	Deb Watson
Sarah Carathers	Adrianna Eastep	Jackie Hill	Beverly McCoy	Esther Sanders	Robin Weaver
Allison Carlisle	Lauren England	Shelly Hobbs	Karen Miller	Beverly Scruggs	Erica Whitaker
Courtney Carrington	Dr. Sarah Essary	Courtney Hollis	Brenda Nance	Dr. Cason Shirley	Danny Winget
Hannah Carter	Aaron Etienne	Marisa Holt	Jeffrey Pannell	Meredith Smith	Anita Wiseman
Kimberly Cashion	Lacy Fanning	Regina Horton	Art Peach	Stacy Smith	Shelli Woody
Margaret Cathey	Angela Frierson	Dr. Houston Jameson	Rachel Peery	Dr. Steve Smith	

THE VITAL *LINK*

Follow us on     

Non Profit Org.  
U.S. Postage  
**PAID**  
Columbia, TN 38401  
Permit No. 710

MAURY REGIONAL MEDICAL CENTER  
1224 Trotwood Avenue  
Columbia, Tennessee 38401  
*Return Service Requested*