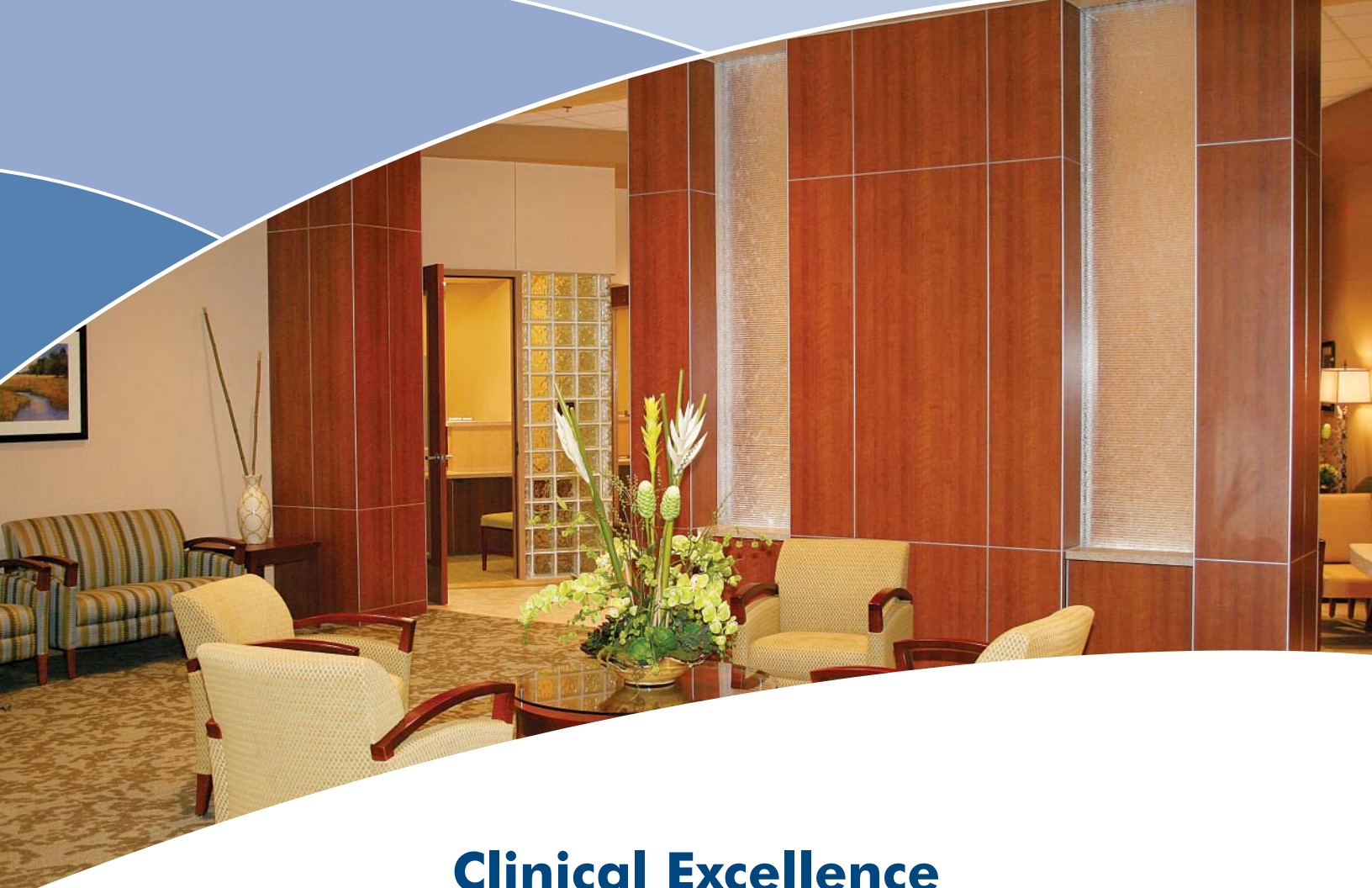


Cancer Services

2018 Quality Report



**MAURY REGIONAL
CANCER CENTER**



Clinical Excellence

The Maury Regional Cancer Center is a comprehensive treatment center committed to medical excellence. We combine stringent clinical standards with educational and support resources to meet the physical and emotional needs of your patients following a cancer diagnosis.

The Maury Regional Cancer Center is accredited in radiation oncology by the American College of Radiology and the Commission on Cancer of the American College of Surgeons.

Cancer Conference

The Cancer Conference is a multidisciplinary team of physicians and clinical professionals who review cases prior to finalizing a patient's treatment plan. This team commonly includes surgeons, medical oncologists, radiation oncologists, radiologists and pathologists. Other specialists may be included depending upon the type and/or location of the cancer. Each brings a unique perspective to the evaluation of complex cases with the end goal of developing the most successful treatment plan. This group also addresses the individual needs of a patient undergoing treatment including, but not limited to, nutrition, medication management, financial counseling and the individual's support network.

In addition, a multidisciplinary clinic is conducted for breast cancer patients each Thursday at the Cancer Center. Patients are scheduled for an appointment between diagnosis and treatment to meet with a surgeon, medical oncologist and radiation oncologist to learn more about their diagnosis, discuss the course of treatment and initiate clinical and financial navigation services.

Services

- Medical oncology
- Hematology
- Radiation oncology
 - o Stereotactic radiosurgery (SRS)
 - o Stereotactic body radiation therapy (SBRT)
 - o Image-guided radiation therapy (IGRT)
 - o High dose rate (HDR) brachytherapy
- Nutritional counseling
- Clinical & financial navigation services
- Education and support groups
- Chaplain services
- Social worker
- Palliative care services
- Clinical trials

Support Services

Clinical & Financial Navigation Services

Those diagnosed with cancer and their caregivers may face unique challenges as they learn more about their disease and treatment regimen. The clinical nurse navigator helps in the coordination of care, education, treatment and side effects. The financial navigator can assist with financial matters, including help to reduce out-of-pocket expenses and aid in identifying financial assistance.

Cancer Resource Center

The Cancer Resource Center helps patients manage the many aspects of their care. This library contains print materials, offers internet access for research and maintains a supply of headwear for those who have experienced hair loss.

Support Groups

The Cancer Support Group provides support to those who are diagnosed with cancer, as well as their friends and family, and offers an opportunity to discuss the challenges, frustrations, fears and feelings associated with cancer. For more information or to register for the support group, call 931.381.1111, ext. 8177.

The Breast Cancer Support Group meets in the Maury Regional Women's Center on the third Monday at 5:30 p.m. Whether newly diagnosed or a survivor, this group offers education, networking and support. The group does not meet in July, August or December. For more information, call 931.540.4166.

The Feeling Fabulous program helps women with cancer look and feel better as their body experiences changes as a result of cancer treatment. Maury Regional Health staff join local stylists who volunteer their time to provide information about makeup techniques for hair loss and skin changes (includes a free makeup kit), skin and nail care, wigs and other head coverings and nutrition. The Feeling Fabulous program is held quarterly at Maury Regional Cancer Center. All supplies are made possible by the Women's Center Fund of the Maury Regional Health Care Foundation. Class size is limited. For more information, call 931.490.7192.

Palliative Care

Palliative care focuses on improving the quality of life for patients with a serious illness by assisting with pain relief, symptom control and stress relief, as well as connecting patients and family members with beneficial resources. Palliative care is helpful at any age and through all stages of the illness; however, it is most beneficial when introduced early in your care and can be used along with curative treatment. To start the palliative care process, ask your physician for a referral.

Financial Assistance

The Maury Regional Health Care Foundation provides assistance to cancer patients through the Cancer Fund, Women's Center Fund and Special Needs Fund. For those who qualify, assistance is available for mammograms, camisoles, lymphedema compression garments, transportation expenses, wigs and headwear.

For those who need rest between treatments, the Foundation maintains The Retreat, a hospitality house that provides daytime accommodations for cancer patients. The home is located near the medical center on Trotwood Avenue and arrangements to stay may be coordinated by the navigation team at the Cancer Center.



Physicians

Our highly skilled physicians are board certified in medical oncology, hematology and radiation oncology. Our goal is to provide patients referred to one of the Cancer Center physicians with complete information about their diagnosis and treatment options, enabling the patient to make an informed decision about their care with the assistance of our multidisciplinary team.

Medical Oncology & Hematology



Varun
Dhulipala, M.D.
*Medical Oncology
& Hematology*



C. Houston
Jameson III, M.D.
*Medical Oncology
& Hematology*



Romany
Johnpulle, M.D.
*Medical Oncology
& Hematology*



Mark H.
Messenger, M.D.
*Medical Oncology
& Hematology*

Maury Regional Medical Group Oncology is a team of board-certified and fellowship-trained physicians who work closely with surgeons and radiation oncologists to provide a personalized treatment plan for each patient. Infusion treatments are delivered by skilled nurses with advanced training in chemotherapy administration. Many of our medications, including chemotherapy, are developed on-site by our expert team of pharmacists. Positron emission tomography (PET) scanning services are available on-site and aid physicians in evaluating tumors throughout the treatment process.

Primary Office

Maury Regional Cancer Center
808 S. James Campbell Boulevard
Columbia, TN 38401

Clinics

In addition to serving patients in their primary office in Columbia, physicians specializing in medical oncology and hematology also provide initial consults and post-treatment follow-up in these clinic locations:

Doctors Medical Office Building
1605 S. Locust Avenue, Suite 102
Lawrenceburg, TN 38464

Marshall Medical Center
Physician Specialist Clinic
1080 N. Ellington Parkway
Lewisburg, TN 37091

Doctor's Pavilion 1
1255 E. College Street, Suite 300
Pulaski, TN 38478

Gynecologic Oncology



Brenda M. May,
D.O., FACOOG
*Gynecologic
Oncology*

Maury Regional Medical Group also has a practice dedicated to gynecologic oncology. Brenda May, D.O., FACOOG, has a practice focused on the diagnosis and treatment of cancers affecting the female reproductive system and advanced gynecologic surgeries including:

- Advanced robotic surgery
- Radical hysterectomy
- Robotic lymphadenectomy
- Omentectomy
- Advanced laparoscopic surgery
- Diagnostic laparoscopic surgery
- Oophorectomy
- Salpingectomy
- Robotic myomectomy
- Radical vulvectomy
- BRCA genetics risk reduction surgeries
- Ovarian cancer
- Endometrial cancer
- Uterine cancer
- Cervical cancer
- Vulvar cancer
- Treatment of pelvic masses
- Colposcopy
- Endometrial biopsy
- Hysteroscopy
- Polypectomy
- Cervical biopsy
- Conization of cervix
- Trachelectomy
- Vaginectomy
- Ablation of vaginal lesions
- Ablation of vulvar lesions

Office

Maury Regional
Medical Office Building
Building A, Suite 305
1222 Trotwood Avenue
Columbia, TN 38401

Radiation Oncology

Radiation treatments are provided by a sophisticated team who utilize advanced technology to precisely deliver radiation while sparing healthy tissue. Radiation oncologists are complemented by simulation technologists, dosimetrists, physicists, radiation therapists and nurses. Technologies continue to advance in the area of radiation therapy and the Cancer Center offers the latest treatment technology.



Joel D.
Kochanski, M.D.
Radiation Oncology



W. Michael
Sattasiri, M.D.
Radiation Oncology



Clinical Trials

Cancer clinical trials are designed to test new ways to treat cancer as well as to prevent, diagnose or manage symptoms of cancer. Those interested in learning more about a clinical trial, should contact one of our medical or radiation oncologists.

Referrals

Patients in southern Middle Tennessee benefit from having outstanding cancer care close to home, eliminating the need to travel long distances for weekly treatments. Referring physicians are provided a copy of the patient's initial consultation and will receive a summary once treatment is completed or as requested. To refer a patient, please contact the appropriate number below:

Medical Oncology
P 931.381.3872
F 931.381.3883

Radiation Oncology
P 931.380.4057
F 931.540.4224

Gynecologic Oncology
P 931.490.7226
F 931.490.7227

Commission on Cancer Quality Measures

The Maury Regional Cancer Center is accredited by the Commission on Cancer (CoC). As an accredited program, the organization collects and reports CoC standardized quality of care measures. The most common cancer diagnoses for our region in order of incidence rate are lung, breast, prostate, colorectal and bladder cancers.

Incidence

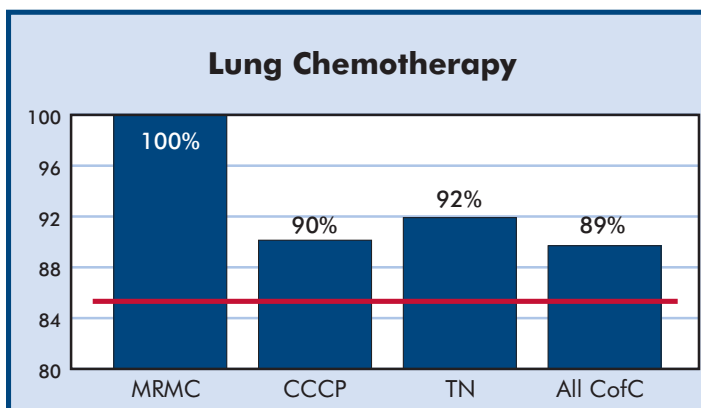
County	Lung & Bronchus	Breast	Prostate	Colorectal	Bladder	All Others	Total by County
Maury	54	67	47	20	25	140	353
Lawrence	38	33	29	15	7	69	191
Marshall	19	20	19	15	8	32	113
Giles	23	7	16	11	6	28	91
Wayne	8	12	12	5	1	25	63
Lewis	9	11	5	5	0	18	48
Other	22	16	10	13	4	30	95
Overall Totals	173	166	138	84	51	342	954

Site-Specific Data

The data below includes the CoC quality of care measures by cancer site for 2016, the most recent year for which data is available. At this time, CoC standardized quality of care measures for prostate cancer have not been defined and bladder measures are in the surveillance phase with no comparative data. As a result, prostate and bladder cancer are not addressed in this report.

Lung

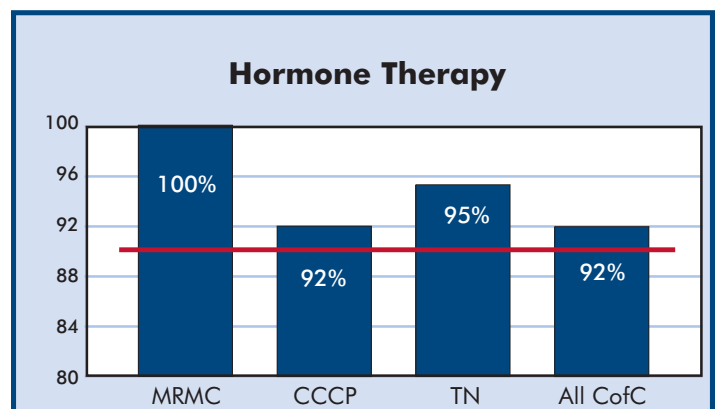
LUNG CHEMOTHERAPY (LCT) - Systemic chemotherapy is administered within 4 months to the day of surgery pre operatively or day of surgery to 6 months postoperatively, or it is recommended for surgically resected cases with pathologic lymph node-positive (pN1) and (pN2) NSCLC (Quality Improvement).



MRCC – Maury Regional Cancer Center
 CCCP – Commission on Cancer Comprehensive Community Cancer Program (programs treating more than 800 patients)
 TN – Commission on Cancer Programs in Tennessee
 All CoC – Commission on Cancer Programs Nationwide
 Commission on Cancer Standard: 85%

Breast

HORMONE THERAPY (HT) - Tamoxifen or third generation aromatase inhibitor is recommended or administered within 1 year (365 days) of diagnosis for women with AJCC T1c or stage IB-III hormone receptor positive breast cancer (Accountability).

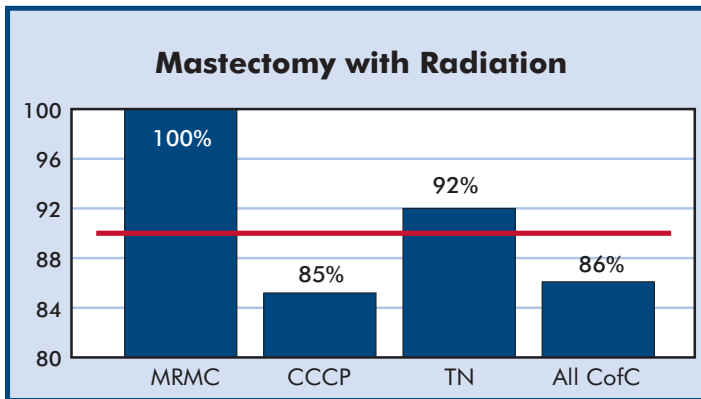


Note: 100% of eligible patients received hormone therapy treatment; however, 3 patients did not receive treatment within the 365 day time frame. Of those who exceeded the 365 day time frame, 1 by 4 days, 1 by 9 days and the other was being treated for another condition that prohibited hormone therapy.

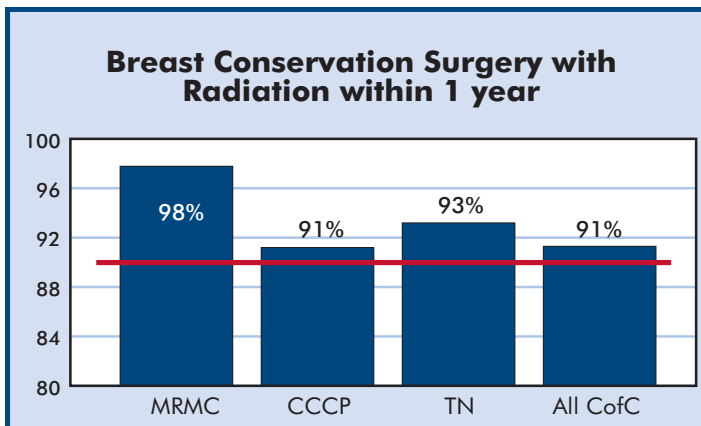
(Continued on next page)

Breast (continued)

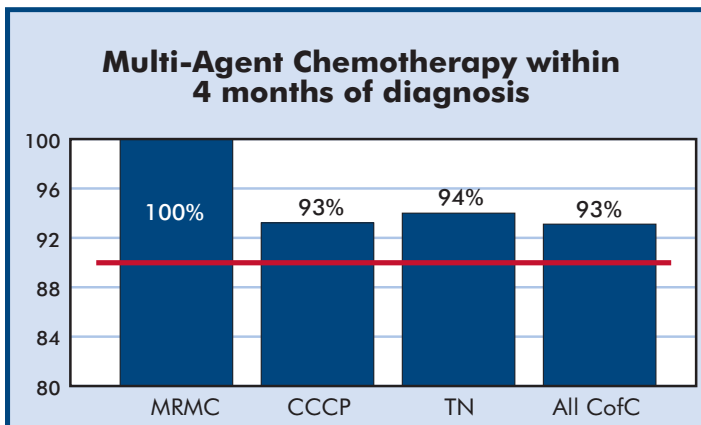
MASTECTOMY WITH RADIATION THERAPY (MASTRT) - Radiation therapy is recommended or administered following any mastectomy within 1 year (365 days) of diagnosis of breast cancer for women with 4 positive regional lymph nodes (Accountability).



BREAST CONSERVATION SURGERY WITH RADIATION THERAPY (BCSRT) - Radiation is administered within 1 year (365 days) of diagnosis for women under the age of 70 receiving breast conservation surgery for breast cancer (Accountability).



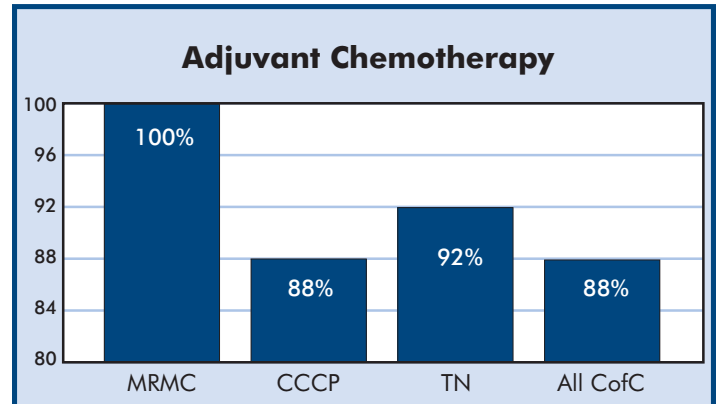
MULTI-AGENT CHEMOTHERAPY (MAC) - Combination chemotherapy is recommended or administered within 4 months of diagnosis for women under 70 with AJCC T1cNO, or state IB - III hormone receptor negative breast cancer. (Accountability)



MRCC - Maury Regional Cancer Center
 CCCP - Commission on Cancer Comprehensive Community Cancer Program (programs treating more than 800 patients)
 TN - Commission on Cancer Programs in Tennessee
 All CoC - Commission on Cancer Programs Nationwide
 Commission on Cancer Standard: 90%

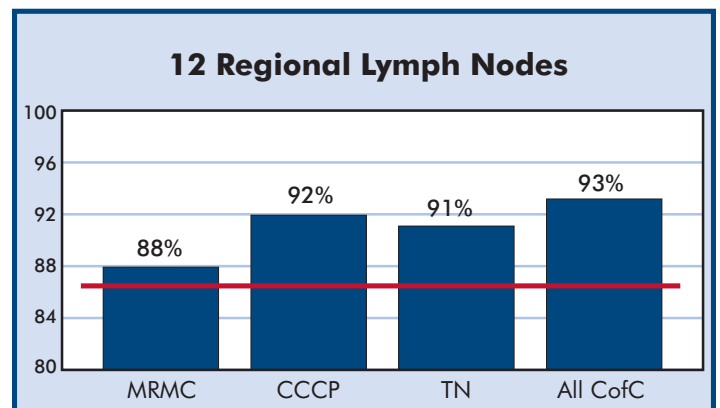
Colorectal

ADJUVANT CHEMOTHERAPY (ACT) - Adjuvant chemotherapy is recommended, or administered within 4 months (120 days) of diagnosis for patients under the age of 80 with AJCC stage III (lymph node positive) colon cancer (Accountability).



MRCC - Maury Regional Cancer Center
 CCCP - Commission on Cancer Comprehensive Community Cancer Program (programs treating more than 800 patients)
 TN - Commission on Cancer Programs in Tennessee
 All CoC - Commission on Cancer Programs Nationwide
 Commission on Cancer Standard: NA

12 REGIONAL LYMPH NODES (12RLN) - At least 12 regional lymph nodes are removed and pathologically examined for resected colon cancer (Quality Improvement).



MRCC - Maury Regional Cancer Center
 CCCP - Commission on Cancer Comprehensive Community Cancer Program (programs treating more than 800 patients)
 TN - Commission on Cancer Programs in Tennessee
 All CoC - Commission on Cancer Programs Nationwide
 Commission on Cancer Standard: 85%



**MAURY REGIONAL
CANCER CENTER**

808 S. James Campbell Boulevard
Columbia, TN 38401
931.380.4057

Vanderbilt-Ingram Cancer Center
(Collaboration with Maury Regional Medical Center)
1003 Reserve Boulevard
Spring Hill, TN 37174
931.380.1194

MauryRegional.com